

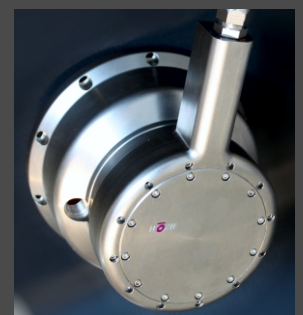
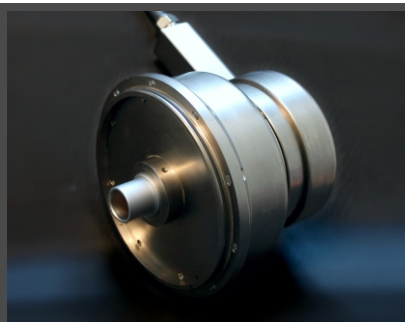
## 12 channel strain gauge telemetry with measurement of the rotational position

### Application:

- Efficient recording of the dynamic operation load at wheel sets of rail vehicles
- Reliable measurement of physical moments, forces, stress and strain
- No need for any modification of the chassis

### Highlights:

- Measurement of strange gauge (12 channel full bridge), angle, rotation speed and direction, rotational position with highest measurement accuracy.
- Extremely robust 3 bearing anodized aluminium mechanics for speed ranges up to 700km/h
- Inductive power supply
- Space saving solution



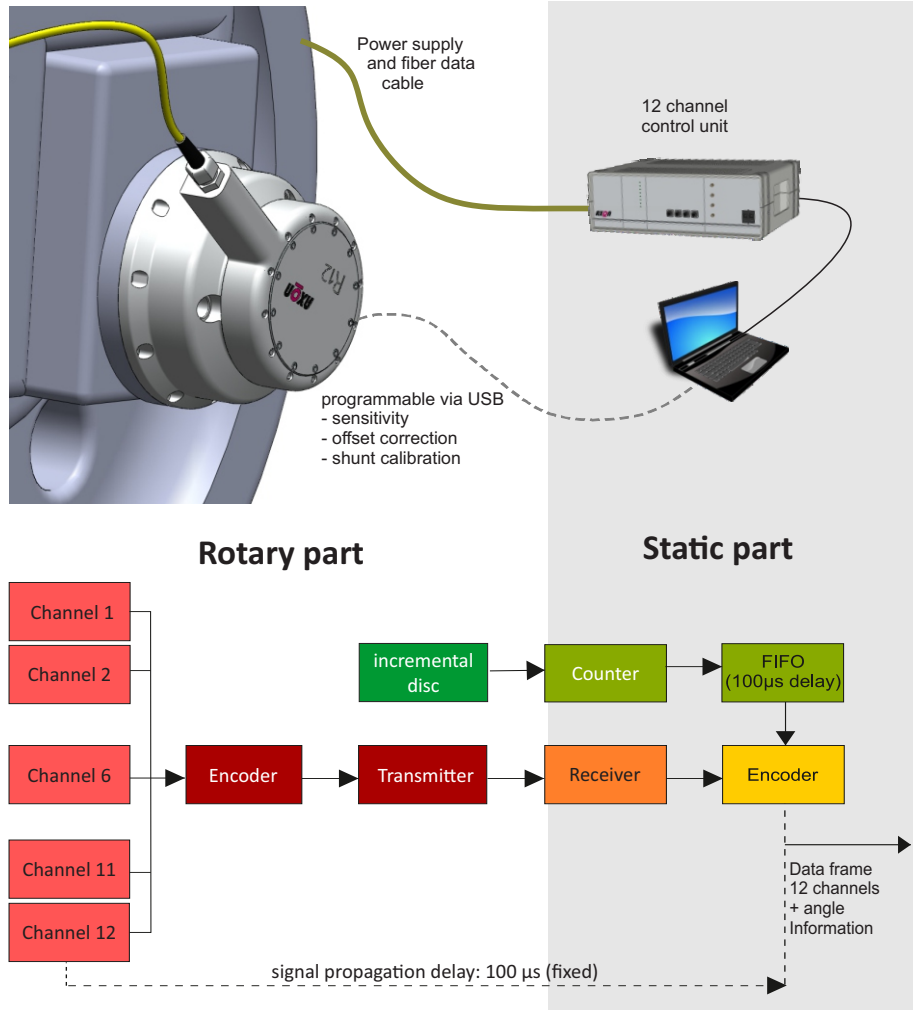
## 12-Channel TELEMETRY SYSTEM

12-channel telemetry system for strain gauge measurements at the shaft end

AXON Systems GmbH - Wildmoos 5 - D-82266 Inning a. Ammersee  
www.axon-systems.com - info@axon-systems.com

# Product Description

## Telemetry System AXILANE R12



### Channels

Signal conditioning per channel  
 Bandwidth per channel  
 Measurement range, infinitely adjustable  
 Offset correction, programmable  
 Sampling Rate / frame  
 Frame content

Resolution per channel  
 Data transmission  
 Rotative power supply  
 Rotations per minute  
 Resolution sine / cosine measurement  
 Accuracy  
 Reference signal for rotation position  
 Data transmission to Control Unit  
 Operating Temperature  
 Mechanics  
 Dimensions [diameter; length]

### 12

1 x strain gauge full bridge  
 2 kHz  
 0,1 - 500 mV/V programmable  
 automatically, offset zero  
 10 kHz  
 12 channel measurement, mark of the  
 rotation direction, angle, RPM  
 16 Bit ADC  
 PCM digital / IR link  
 Inductive  
 4000 rpm  
 1°  
 0,2%  
 Zero Index  
 optical fiber  
 -40°C - +80°C  
 3 bearing mechanics  
 D= 200mm; L=150 mm